

DLT-DKS-1550

Kerr soliton frequency comb generators @ 1550 nm

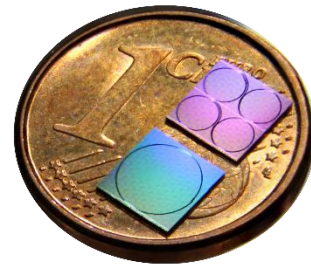
Product datasheet / Ver 1.1

Kerr soliton frequency comb generators

- Broadband spectrum spanning C+L bands
- Free Spectral Range (FSR): 10-1000 GHz
- 14-pin butterfly package for direct use or bare die for package-level integration
- Proven and documented performance
- Seamless operation via external standard tunable lasers

Applications

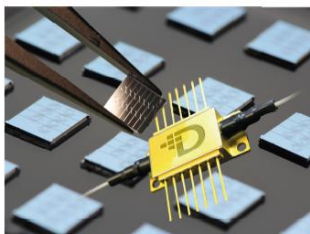
- Optical communications
- Microwave photonics
- Optical ranging
- Frequency metrology
- Quantum computing



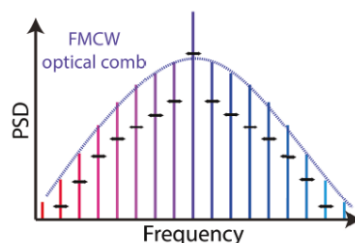
Deeplight's Kerr soliton frequency comb generators enable direct access to the Dissipative Kerr Soliton (DKS) technology for proof-of-concept demonstrations and system-level experiments. These products are designed for a wide range of applications such as **optical communications, microwave photonics, or optical ranging.**

Our technology is based on **ultra-low-loss silicon nitride Photonic Integrated Circuits (PICs)**. Building upon the groundbreaking manufacturing experience of our academic partner EPFL, Deeplight's Kerr frequency generators are not subject to a thermal drag, allowing for seamless frequency-comb generation via wavelength scans provided by benchtop tunable lasers.

The key feature of our frequency comb generators **is their proven performance**, documented in a full characterization report, and the associated operating instructions, **which allow for direct use in more complex system-level experiments.**



Direct technology access:
Bare die or butterfly package



Kerr soliton frequency comb:
Broadband and low phase noise



Proven performance:
Fully characterized units with operation instructions

Explore the future of photonics with Deeplight. Contact us!

Website: deeplight.ai

Email: Info@deeplight.ai

DLT-DKS-1550 - Product datasheet / Ver 1.1

The following performance parameters are given for a typical DLT-DKS-1550 product and might vary from device to device.

Parameters	Min.	Typ.	Max.	Units	Comments
Input and Output Interface		FC/APC			PM Panda fiber. Only applies to butterfly packaged
Free spectral range (FSR)	10		1000	GHz	
Intrinsic Quality factor	8×10^6	10×10^6	15×10^6		
Centre wavelength	1545	1550	1560	nm	
Centre frequency tunability	100		300	GHz	
Power per line of 5 lines at both sides of centre peak		-25	-20	dBm	
3dB Bandwidth	20	30		nm	Corresponding to >35 lines for 100 GHz FSR
Footprint (W×L×H)		30×50×15		mm ³	Custom 14-pin butterfly. Only applies to butterfly packaged

DLT-DKS-1550 is available either as individual bare dies or packaged inside a custom 14-pin butterfly unit. This unit can be shipped with a passive box for easy connection to temperature controller.

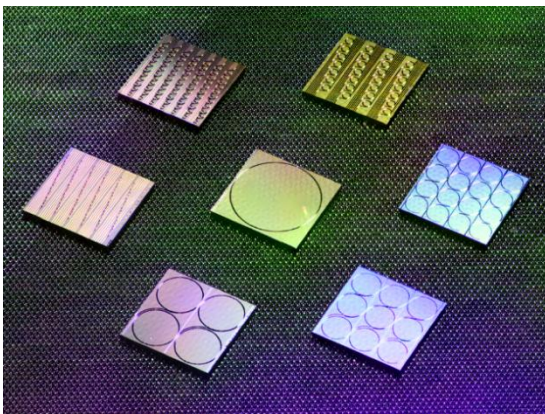


Figure 1. Bare dies for Kerr frequency comb generation with different FSR

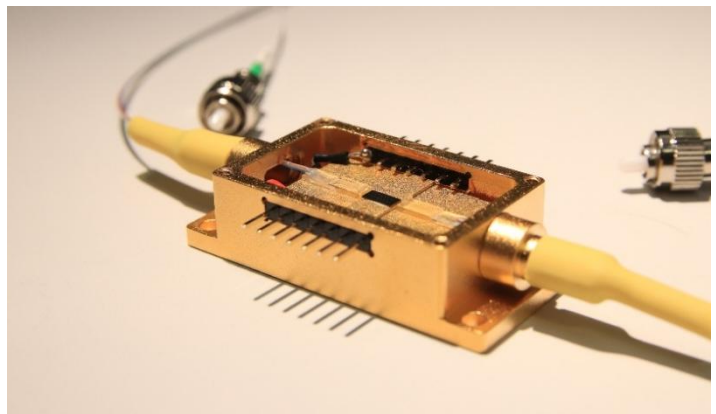


Figure 2. Custom 14-pin butterfly package with input and output fibers

Explore the future of photonics with Deeplight. Contact us!

Website: deeplight.ai

Email: info@deeplight.ai

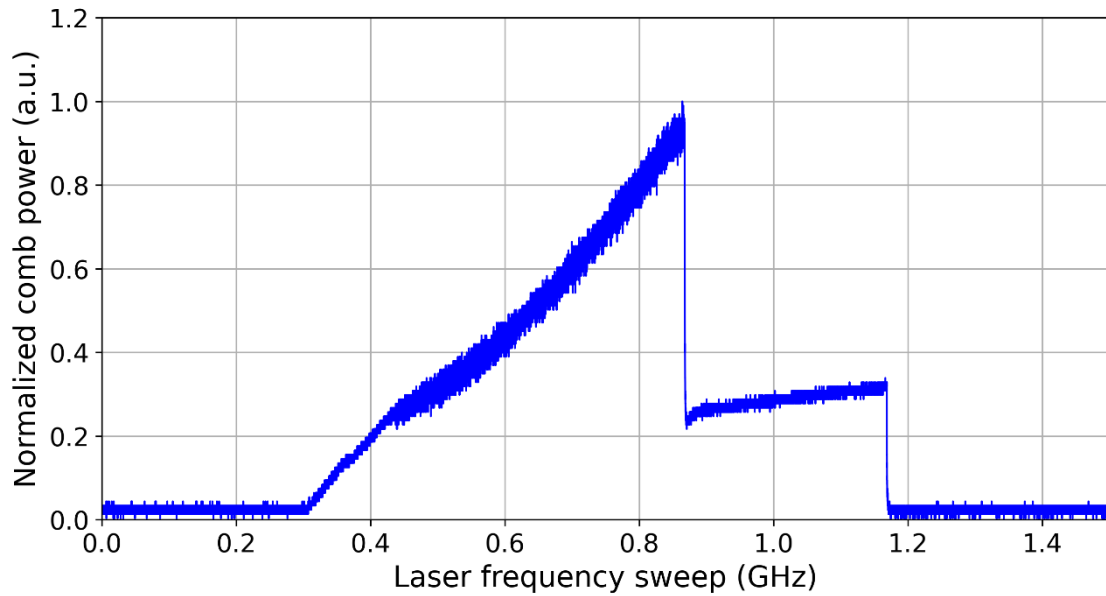


Figure 3. Comb power as a function of pump laser frequency from DLT-DKS-1550 with 100 GHz FSR

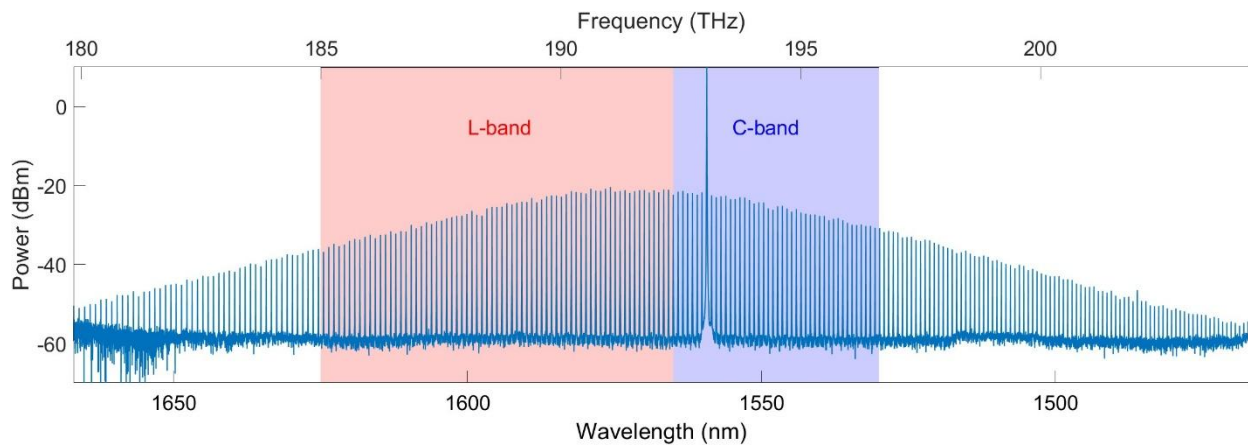


Figure 4. Optical frequency comb spectrum output from DLT-DKS -1550 with 100 GHz FSR. Shaded areas correspond to telecommunication L and C bands

